

EBTx Hub Client

The EBTx Hub Client allows users to interact with the SPi EBT Hub. The tool allows users to create EBT documents, and send them to the SPi EBT Hub, combined with the ability to receive inbound EBT documents from other market participants via the SPi EBT Hub. The EBTx Hub Client automatically generates document and transaction reference numbers, thus ensuring that every EBT document and transaction created is unique. Every EBT document processed is archived to a specified folder. The tool can be installed on any Windows-based computer with Internet connectivity.

Product Benefits

- Although EBTx Hub Client can be used as a production application, it can also be used as a testing tool. Connecting to the SPi Test EBT Hub, users can perform end-to-end testing by creating transactions in response to the transactions sent out from a customer information system (CIS). This test can be completed in its entirety because the tool can be set up to act as either a retailer or a distributor.
- Users can also send transactions using the tool, and process them using their CIS. With the EBTx Hub Client application, users do not need to rely on other market participants to perform end to end testing.

About SPi

The SPi Group Inc. is a Toronto-based provider of services and solutions primarily to the utility and energy industry. SPi's technology portfolio includes secure, reliable and auditable data transport solutions, and a variety of billing and settlement solutions, based on portable, open standards. SPi's team of highly skilled IT and energy industry professionals developed these technologies that operate mission-critical business processes for over 70 public and private sector clients.

Other Products and Services

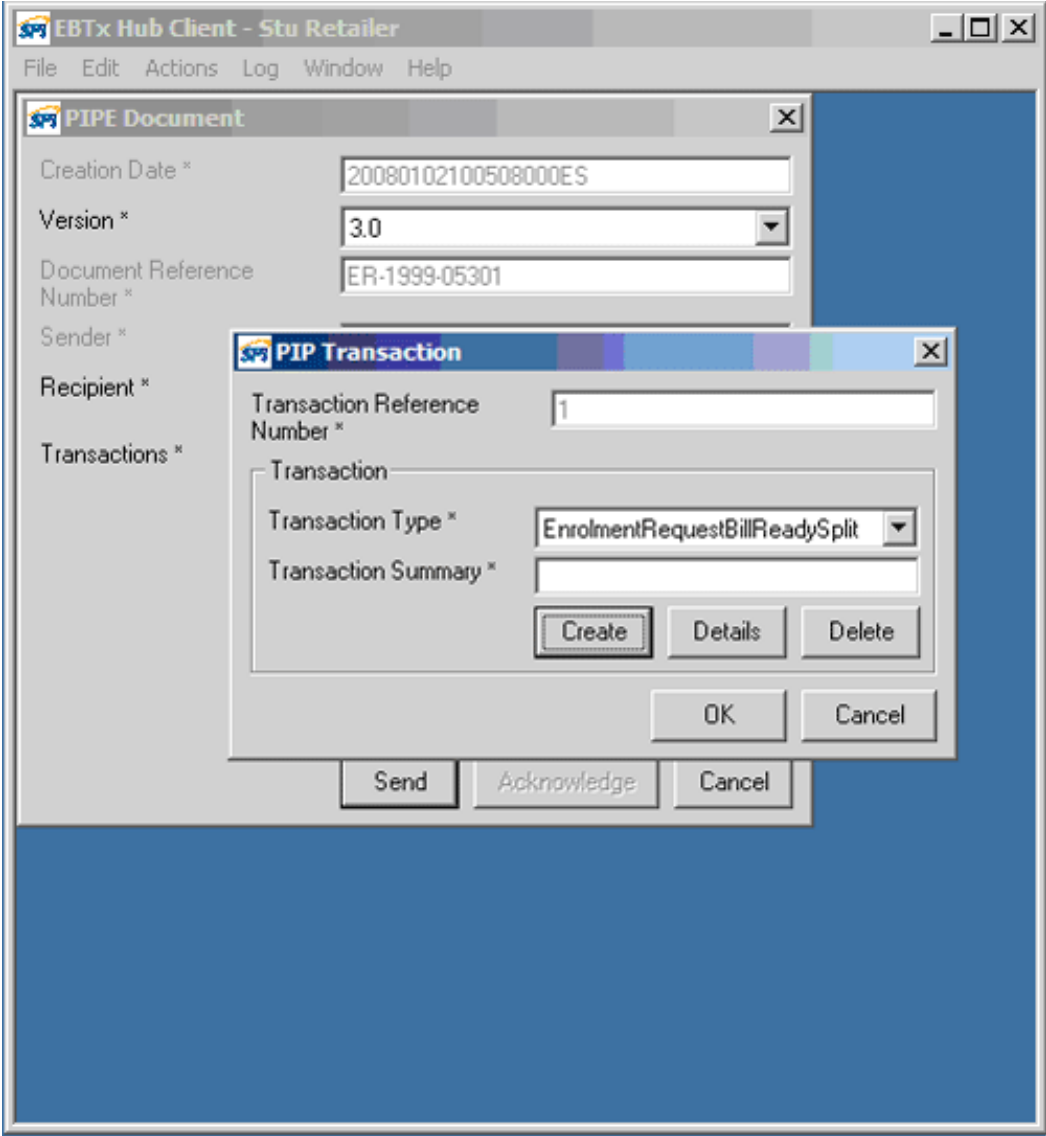
Services

- Ontario Electricity Market Services (EBT Hub)
- Retailer Managed Services
- Ontario Gas Market Services
- Ontario MDM/R
- Consulting and Software Development
- Technology Licensing
- Project Management Services and Support

Products

- EBT Hub Connector
- Gas Market Connector
- *Productivity Tools*
 - Account Viewer
 - EBT Exception Viewer
 - EBT Viewer
- XML Generator
- EBTx Hub Client

Screen Shot



The SPi Group Inc.
154 University Avenue, Suite 300,
Toronto, ON, Canada M5H 3Y9
Tel: 416. 408.1395
Fax: 416. 408.1396
SPi_info@thespigroup.com
www.thespigroup.com